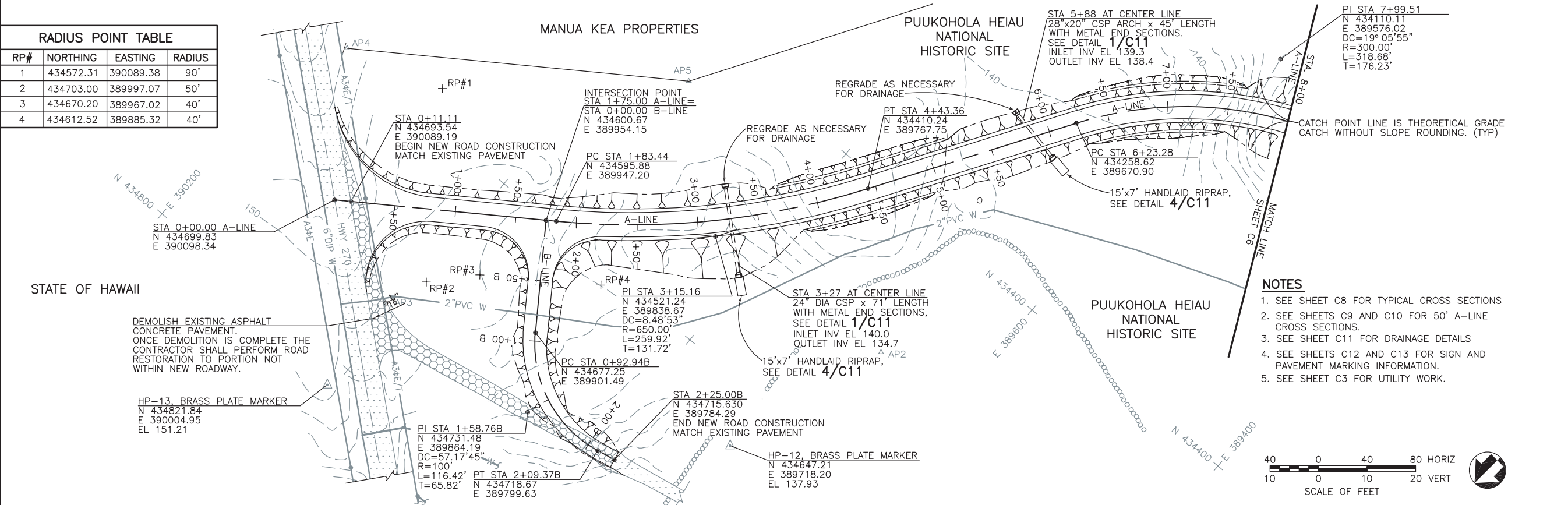
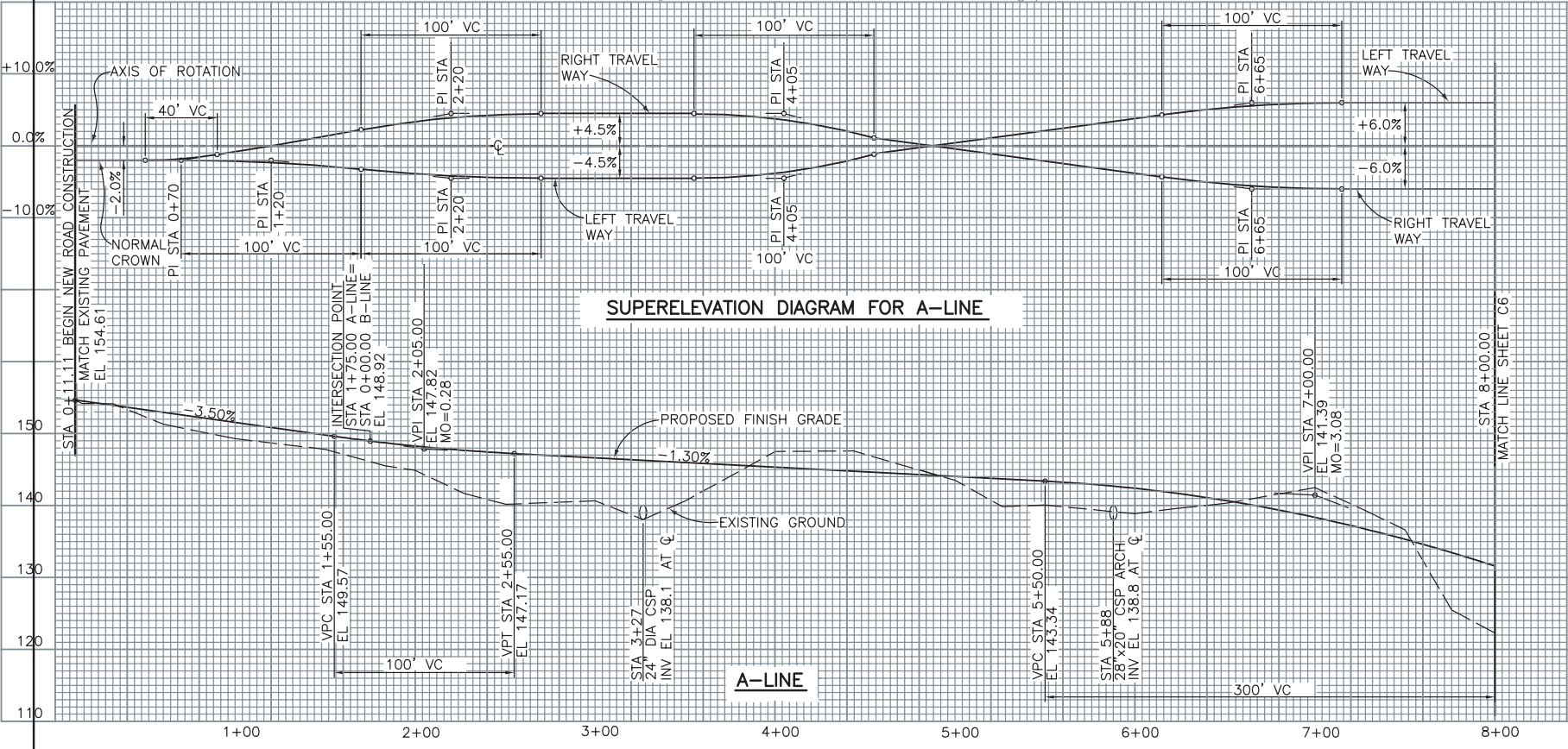
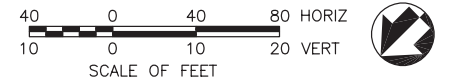


RP#	NORTHING	EASTING	RADIUS
1	434572.31	390089.38	90'
2	434703.00	389997.07	50'
3	434670.20	389967.02	40'
4	434612.52	389885.32	40'



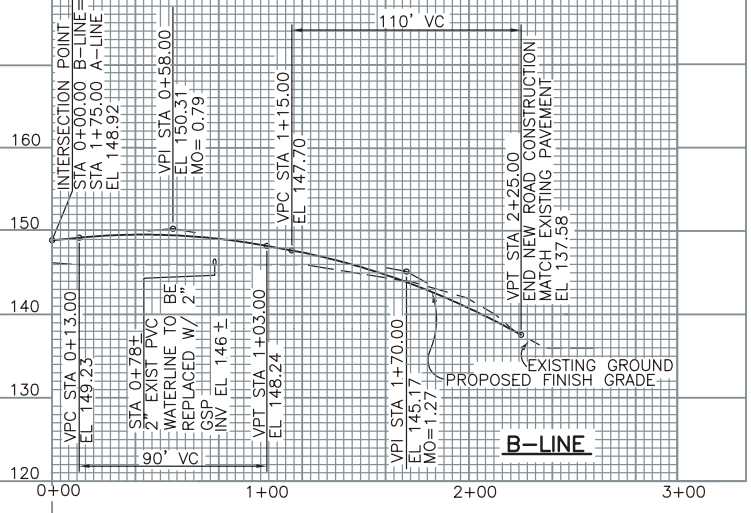
- NOTES**
- SEE SHEET C8 FOR TYPICAL CROSS SECTIONS
 - SEE SHEETS C9 AND C10 FOR 50' A-LINE CROSS SECTIONS.
 - SEE SHEET C11 FOR DRAINAGE DETAILS
 - SEE SHEETS C12 AND C13 FOR SIGN AND PAVEMENT MARKING INFORMATION.
 - SEE SHEET C3 FOR UTILITY WORK.



B-LINE SUPERELEVATION

ROAD CROSS SLOPE LEFT OF CENTER LINE: STA 0+13 MATCH A-LINE SURFACE AND TRANSITION TO -2% AT STA 0+43. MAINTAIN -2% FROM STA 0+43 TO STA 1+95, THEN TRANSITION FROM -2% TO CROSS SLOPE GRADE THAT EXISTS AT STA 2+25.

ROAD CROSS SLOPE RIGHT OF CENTER LINE: STA 0+13 MATCH A-LINE SURFACE AND TRANSITION TO -2% AT STA 0+43. MAINTAIN -2% FROM STA 0+43 TO STA 0+80. FROM STA 0+80 TO 1+10 TRANSITION FROM -2.0% TO +2.0%. MAINTAIN +2.0% CROSS SLOPE FROM STA 1+10 TO STA 1+95, THEN TRANSITION FROM +2.0% TO CROSS SLOPE GRADE THAT EXISTS AT STA 2+25.



DESIGNED: B. DOE	SUB SHEET NO. C8	TITLE OF SHEET SAMPLE ROADWAY PLAN AND PROFILE	DRAWING NO. 999
TECH. REVIEW: L. WOLF		NAME OF PARK	PKG. NO. 108
DATE: 10/94			SHEET NO. 10
			OF 43

8/24/01 11:14 C:EVERMAN RT5 S:\SW\USER\WP510\FINAL-SET\QWA\C8.DWG

Figure A1 – Sample Roadway Plan and Profile (C8) – 499/41001